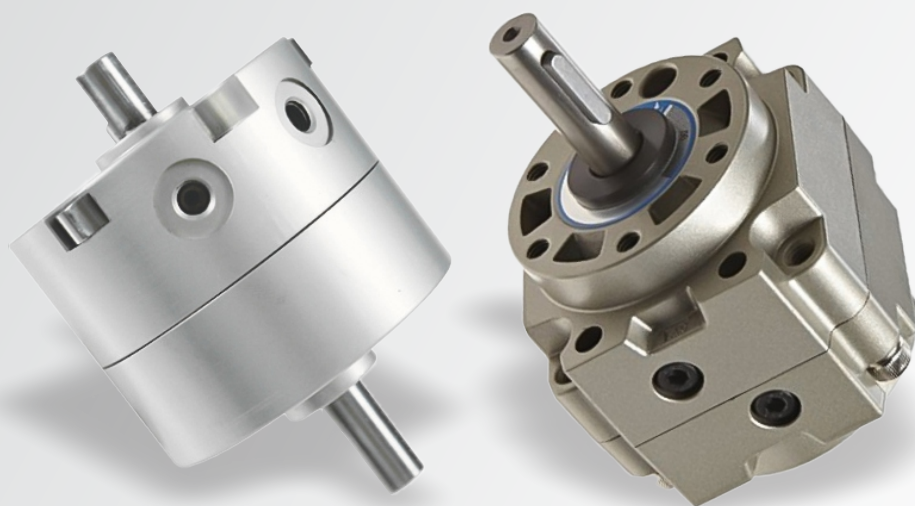


Catálogo Técnico

Atuador Rotativo de Palheta

Série CRS



GHPC
Tecnologia em Produtos Pneumáticos

Vantagens

- Compacto e Leve
- Ângulo ajustável: **90°**, **180°** e **270°**
- Grande torque
- Com custo reduzido



Ø10 ~ 40



Ø50 ~ 100

Características Técnicas

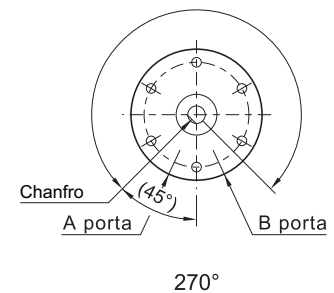
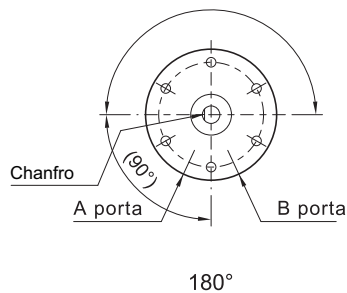
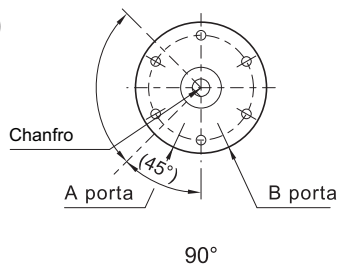
Modelo	CRS10	CRS15	CRS20	CRS30	CRS40	CRS50	CRS63	CRS80	CRS100
Fluido	Ar comprimido								
Ação	Dupla Ação								
Conexão	M5					RC1/8"		RC1/4"	
Torque (N•m)	0.14	0.38	0.78	1.8	3.8	5	10	18	35
Rotação	90° 180° 270°								
Temperatura	5° ~ 60°C								
Pressão de trabalho	1.5 ~ 7 Bar								
Lubrificação	Não necessário								
Energia Cinética Admissível (J)	0.0015	0.001	0.003	0.02	0.04	0.082	0.12	0.39	0.6

■ Ângulo de Rotação 90°^{+4°}₀

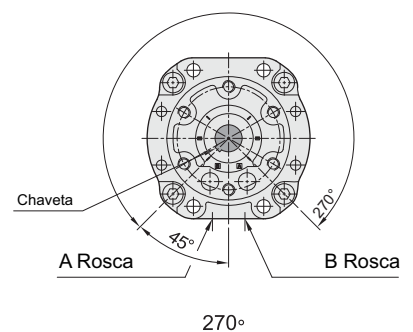
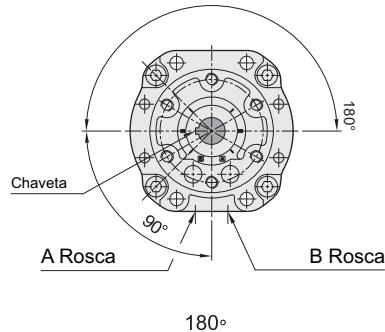
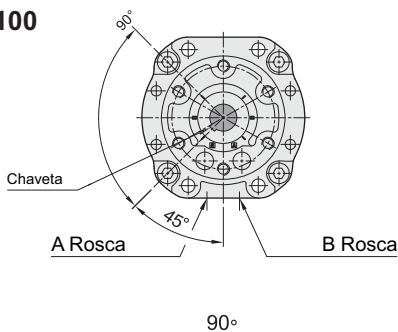
■ Ângulo de Rotação 180°^{+4°}₀

■ Ângulo de Rotação 270°^{+4°}₀

• 10 ~ 40



• 50 ~ 100



Codificação

CRS [] - [] - []

Modelo		Tamanho (mm)	Ângulo Rotação	
-	Simple		10	90
M	Magnético	15	Corpo Redondo	180°
		20		
		30		
U	Ajuste de ângulo*	40	Corpo Quadrado	270°
		50		
		63		
MU	Magnético e Ajuste de ângulo*	80		
		100		

*Disponível apenas até CRS40

Sensor Aplicável

SM-07 [] - []

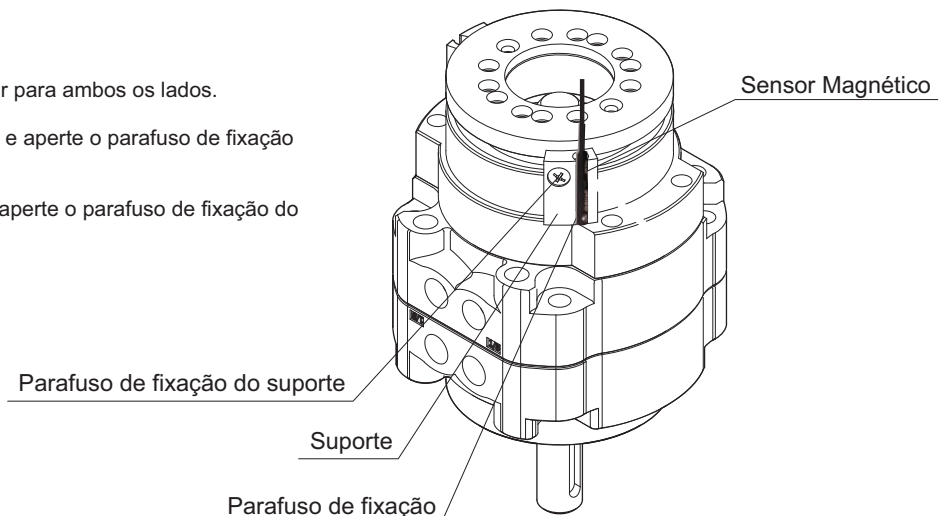


Tipo		Cabo	
R	Reed (2 fios)	2M	2 metros
P	PNP (3 fios)	M8	Conector M8
N	NPN (3 fios)		

Exemplo: SM-07P-M8
SM-07N-2M

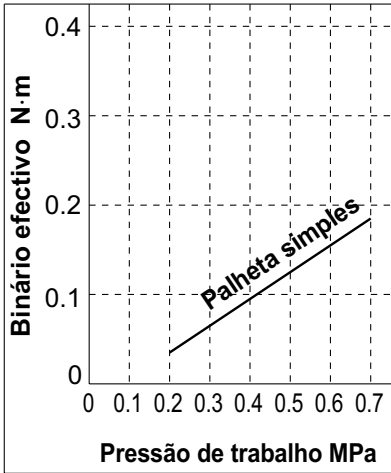
Método de Ajuste do sensor:

1. Solte o parafuso do suporte para que possa deslizar para ambos os lados.
2. Insira o sensor no suporte nivelando-o com o fundo e aperte o parafuso de fixação para travá-lo.
3. Ajuste o suporte no ângulo desejado e em seguida aperte o parafuso de fixação do mesmo.

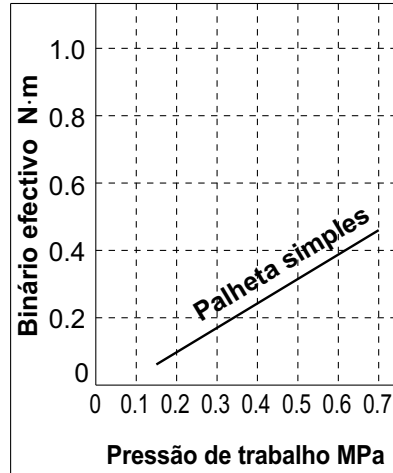


Força Efetiva - Corpo Redondo

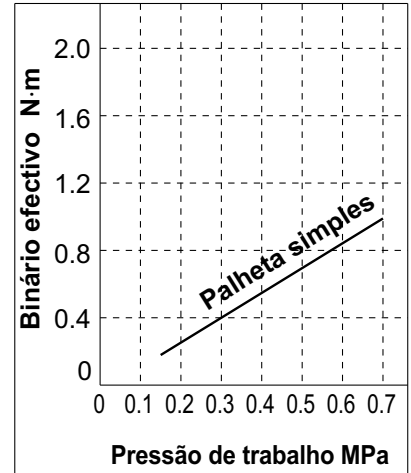
CRS10



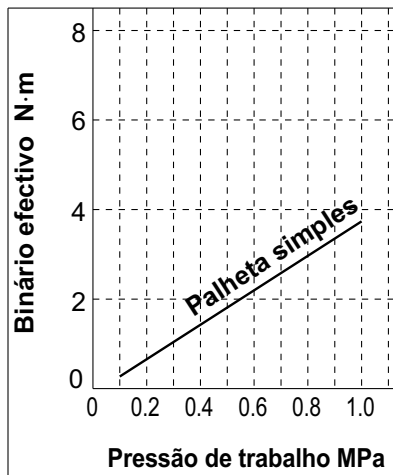
CRS15



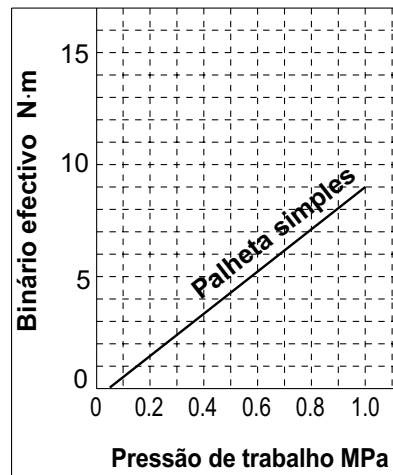
CRS20



CRS30

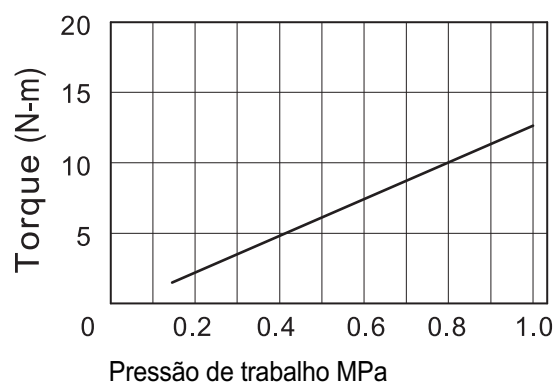


CRS40

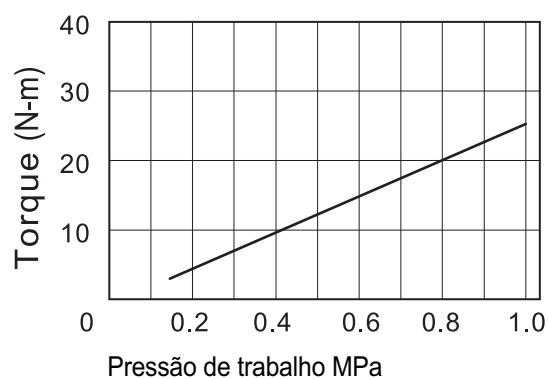


Força Efetiva - Corpo Quadrado

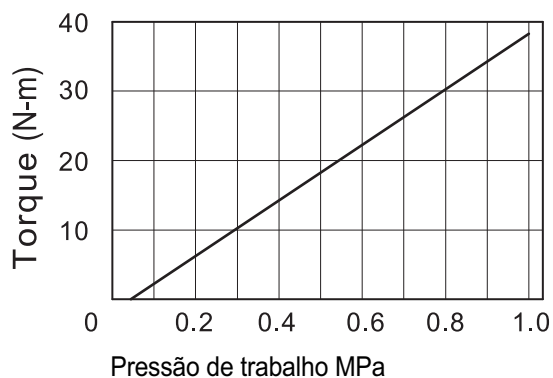
CRS50



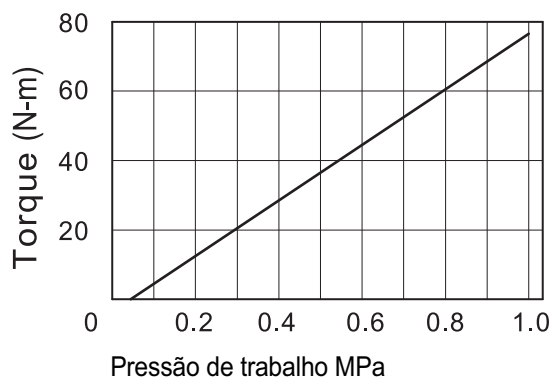
CRS63



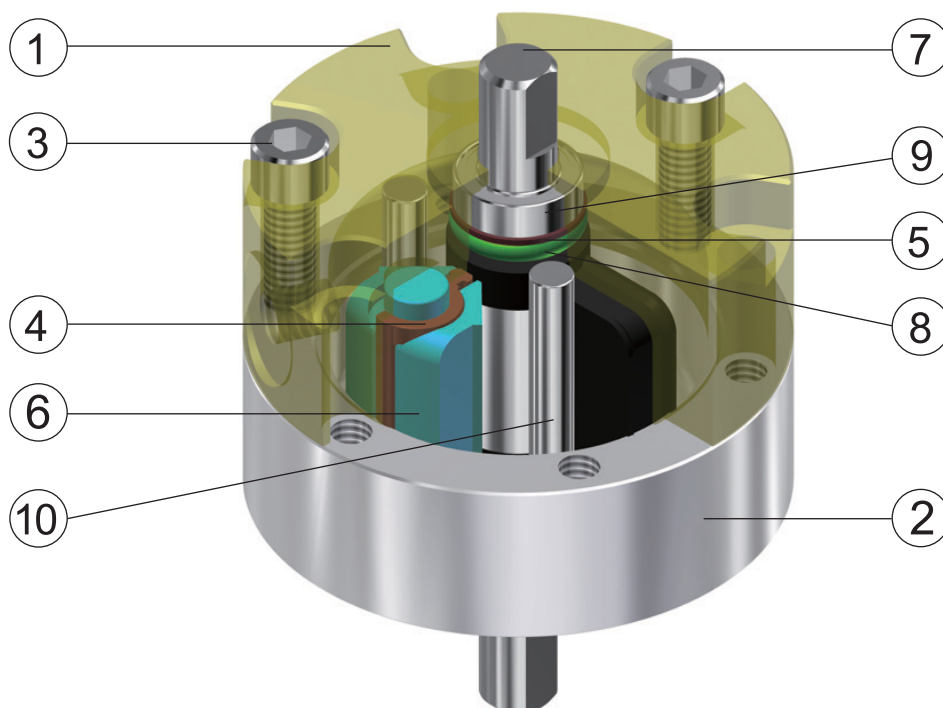
CRS80



CRS100

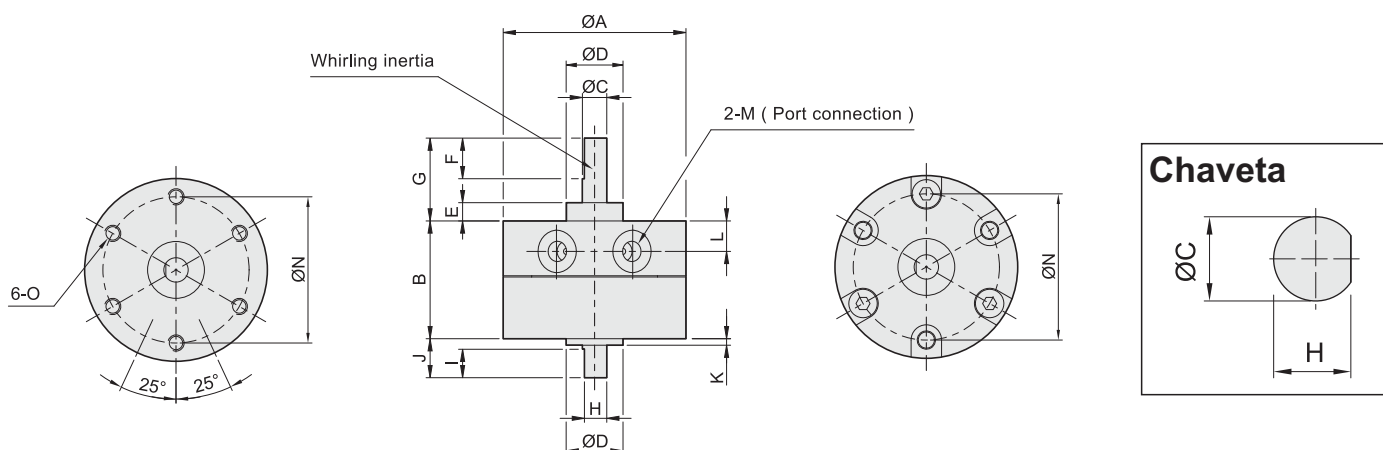


Construção



	Descrição	Material	Qtd
1	Tampa Traseira	Liga de Alumínio Anodizado	1
2	Tampa Dianteira	Liga de Alumínio Anodizado	1
3	Parafuso	Aço Carbono	3
4	Vedação Especial	NBR	1
5	Junta	NBR	2
6	Batente	Resina	1
7	Eixo	Aço Inoxidável	1
8	O-ring	PU	2
9	Rolamento	Rolamento de esfera	2
10	Pino	Eixo de Aço	2

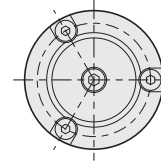
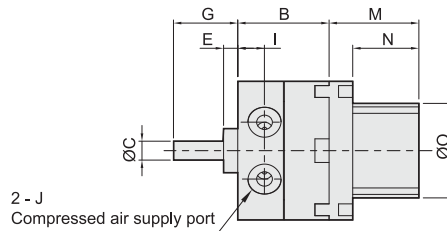
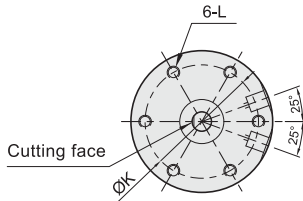
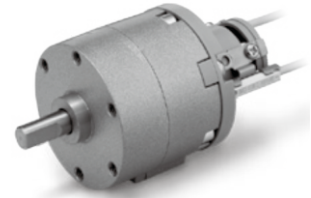
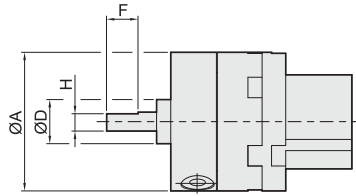
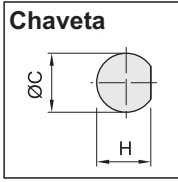
Dimensional - CRS10, 15, 20, 30 e 40



Modelo	A	B	C	D	E	F	G	H	I	J	K	L	M	N	O
CRS10-90															
CRS10-180	30	17	4	9	3	9	14	3.5	5	8	1	4.2	M5x0.8p	24	M3x0.5p
CRS10-270															
CRS15-90															
CRS15-180	35	20.1	5	12	4	10	18	4.5	6	9	1.5	5	M5x0.8p	29	M3x0.5p
CRS15-270															
CRS20-90															
CRS20-180	44	29.1	6	14	4.5	10	20.3	5.5	7	9.6	1.6	8.5	M5x0.8p	36	M4x0.7p
CRS20-270															
CRS30-90															
CRS30-180	51	40	8	16	5	12	22	7.5	8	13	2	11	M5x0.8p	43	M5x0.8p
CRS30-270															
CRS40-90															
CRS40-180	64	45	10	25	6.5	22	30	9	9	15	4.5	9.5	M5x0.8p	56	M5x0.8p
CRS40-270															

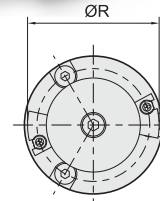
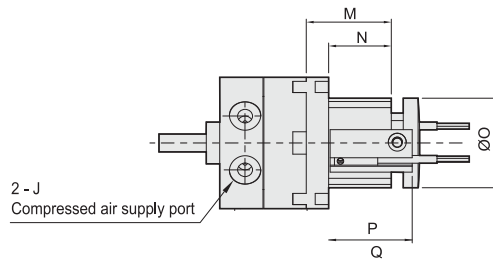
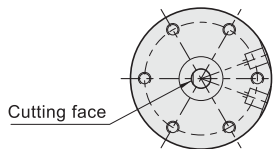
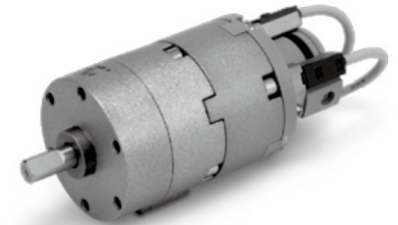
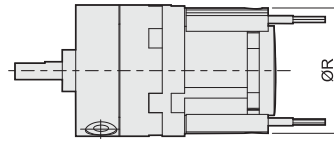
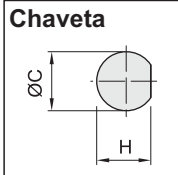
• CRSM - com Magnético

Chaveta



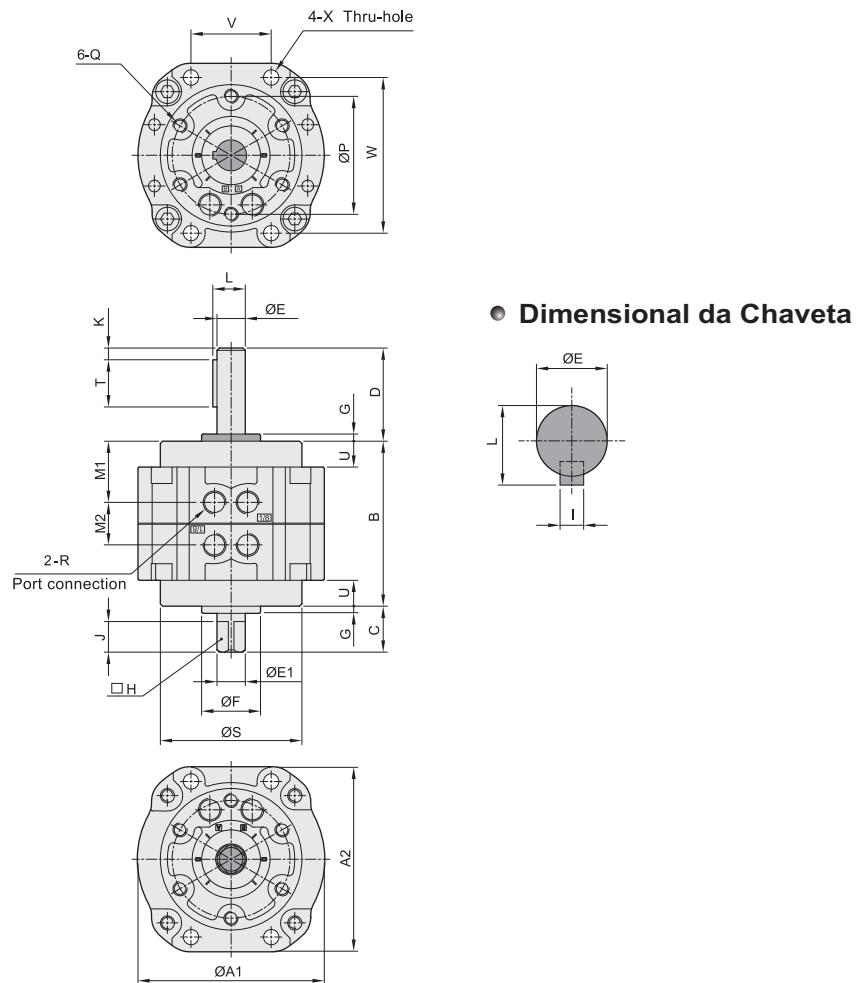
• CRSU | CRSMU - com Magnético e Ajuste de ângulo

Chaveta



Modelo	A	B	C	D	E	F	G	H	I	J	K	L	M	N	O	P	Q	R
CRS10-90																		
CRS10-180	30	17	4	9	3	9	14	3.5	4.2	M5x0.8p	24	3x0.5p	24	18	18	23.3	24	29
CRS10-270																		
CRS15-90																		
CRS15-180	35	0.	5	12	4	10	18	4.5	5	M5x0.8p	29	3x0.5p	28	22	24	27.3	29.5	34
CRS15-270																		
CRS20-90																		
CRS20-180	44	9.	6	14	4.5	10	20.3	5.5	8.5	M5x0.8p	36	4x0.7p	28.	21	30	28	30.5	42
CRS20-270																		
CRS30-90																		
CRS30-180	51	40	8	16	5	12	22	7.5	11	M5x0.8p	43	5x0.8p	32.	24	34	30.8	34	47
CRS30-270																		
CRS40-90																		
CRS40-180	64	45	10	25	6.5	22	30	—	9.5	M5x0.8p	56	5x0.8p	34.	26	34	33	36	47
CRS40-270																		

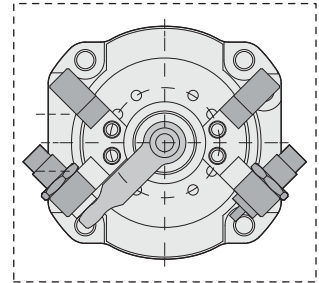
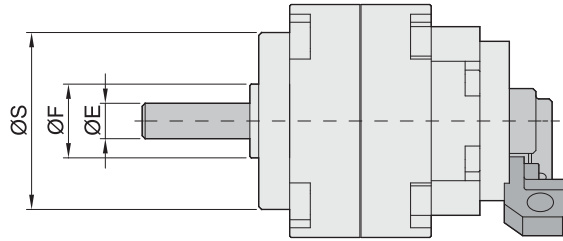
Dimensional - CRS50, 63, 80 e 100



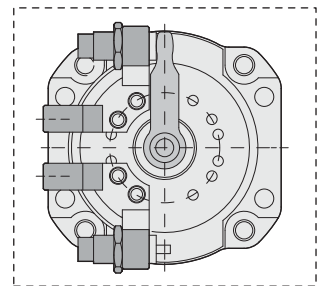
Modelo	A1	A2	B	C	D	E	F	G	H	I	J	K	L	M1	M2	P	Q	R	S	T	U	V	W	ØX
CRS50-90																								
CRS50-180	79	78	70	19.5	39.5	12	25	3	10	4	13	5	13.5	26	18.2	50	M6X1.0P	RC1/8"	60	20	11	34	66	6.5
CRS50-270																								
CRS63-90																								
CRS63-180	98	98	80	21	45	15	28	3	12	5	14	5	17	28.9	22.2	60	M8X1.25P	RC1/8"	75	25	14	39	83	9
CRS63-270																								
CRS80-90																								
CRS80-180	110	110	90	23.5	53.5	17	30	3	13	5	16	5	19	30	30.2	70	M8X1.25P	RC1/4"	88	41	15	48	94	9
CRS80-270																								
CRS100-90																								
CRS100-180	140	140	103	30	65	25	45	4	19	7	22	5	28	35.4	32.2	80	M10X1.5P	RC1/4"	108	40	11.5	60	120	11
CRS100-270																								

• com Magnético e Ajuste de ângulo

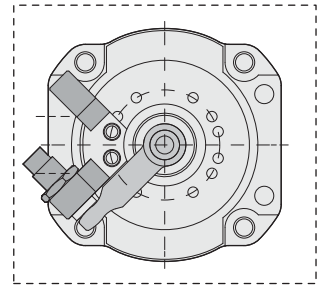
■ Ajuste de Ângulo do Sensor



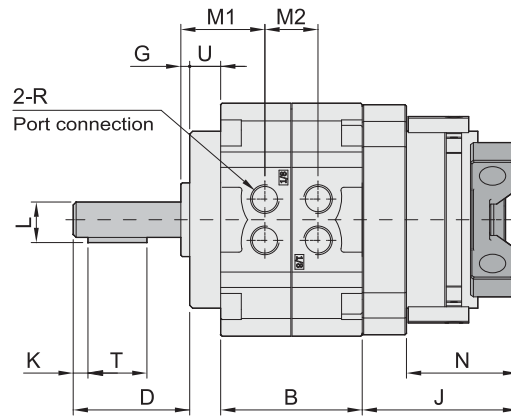
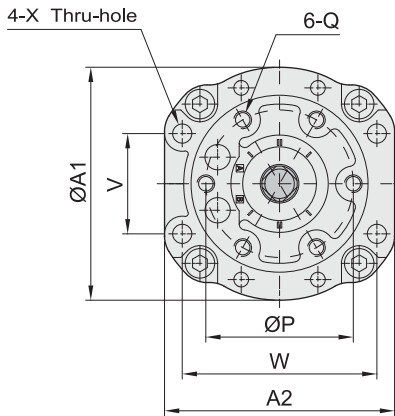
● CRS 90°



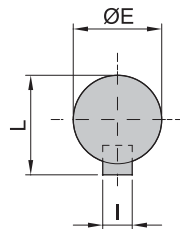
● CRS 180°



● CRS 270°



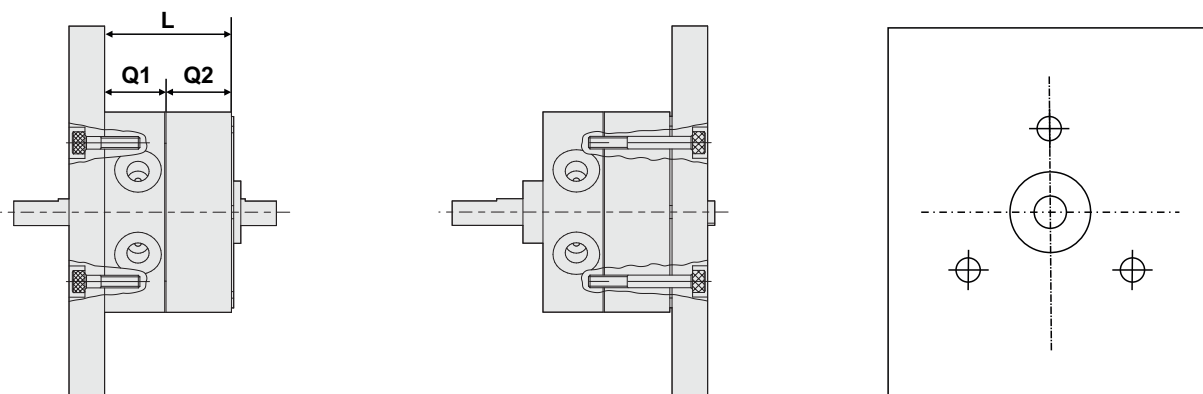
● Dimensional da Chaveta



Modelo	A1	A2	B	D	E	F	G	I	J	K	L	M1	M2	N	P	Q	R	S	T	U	V	W	ØX
CRS50-90																							
CRS50-180	79	78	48	50.5	12	25	3	4	52.7	5	13.5	29	18	37.7	50	M6x1.0P	RC 1/8"	60	20	11	34	66	6.5
CRS50-270																							
CRS63-90																							
CRS63-180	98	98	52	59	15	28	3	5	56.4	5	17	31.9	22.2	37.7	60	M8x1.25P	RC 1/8"	75	25	14	39	83	9
CRS63-270																							
CRS80-90																							
CRS80-180	110	110	60	68.5	17	30	3	5	58.9	5	19	33	30	39.2	70	M8x1.25P	RC 1/8"	88	36	15	48	94	9
CRS80-270																							
CRS100-90																							
CRS100-180	140	140	80	76.5	25	45	4	7	62.9	5	28	39.4	32.2	39.2	90	M10x1.5P	RC 1/4"	108	40	11.5	60	120	11
CRS100-270																							

Tipos de Montagem

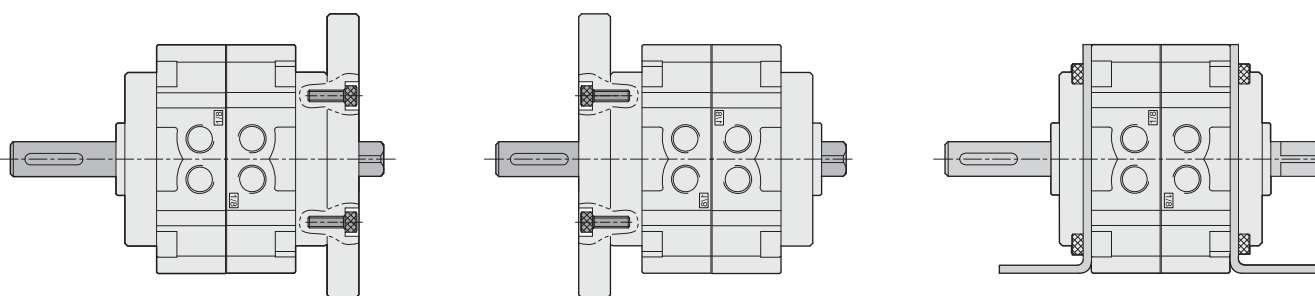
• CRS10 ~ 40



A dimensão "L" dos atuadores é fornecida na tabela abaixo para os parafusos da tampa sextavados de norma JIS. Se utilizar este tipo de parafuso, as cabeças serão alojadas corretamente.

Tipo	L	Parafuso
CRS10	11.5	M2.5
CRS15	16	M2.5
CRS20	24.5	M3
CRS30	34.5	M4
CRS40	39.5	M4

• CRS50 ~ 100



• Montagem Traseira

• Montagem Frontal

• Montagem por Pés



Precauções

- A GHPC do Brasil não se responsabiliza pelo uso indevido, mau uso, do equipamento.
- A utilização de máquinas e equipamentos pneumáticos deve ser feita apenas por profissionais qualificados.
- Não exceder as especificações descritas no catálogo, afim de evitar danos à integridade física do produto e/ou operador.
- Garantir o total cuidado no manuseio e instalação do produto afim de evitar choques e/ou quedas à peça.
Caso venha acontecer, mesmo que aparentemente intacto, poderá ter causado danos à sua função.
- Garantir total limpeza dos tubos e conexões antes de serem conectados ao produto.
- Lubrificação NÃO NECESSÁRIA, independente do meio em que a peça esteja sendo utilizada. (Ex.: Poeira, foligens, etc.)
- Antes de reparar uma peça, sempre desconecte a fonte de alimentação e despressurize o sistema. Deve-se levar em consideração o manuseio seguro da unidade com base no fluido controlado nela.