

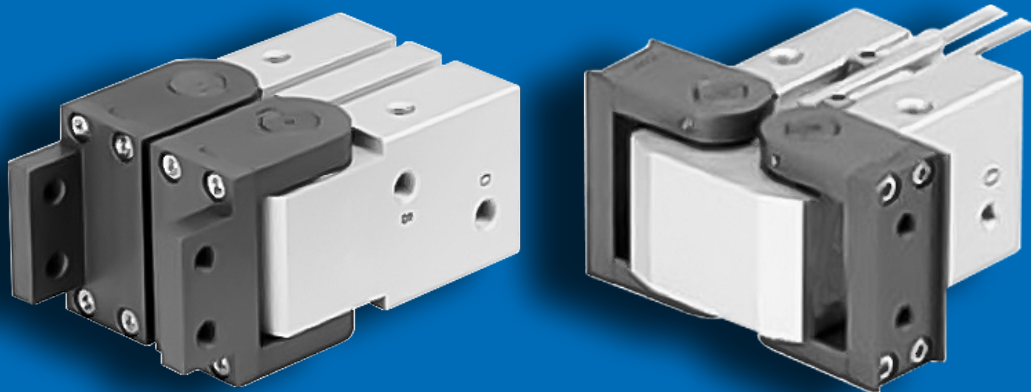


GHPC[®]
Tecnologia em Produtos Pneumáticos

Catálogo Técnico

**Garra Pneumática com
Abertura Angular 180°
tipo Pinhão e Cremalheira**

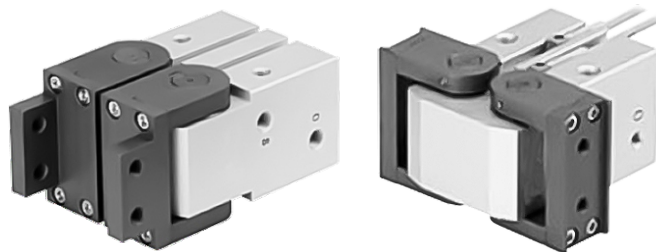
Série CHW2



Garra Angular 180° tipo Pinhão e Cremalheira - Série CHW2

Vantagens

- Grande Robustez
- Comprimento total reduzido
- 4 canais para sensores magnéticos
- À prova de poeira
- 2 opções de dedos

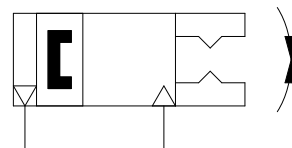


Características Técnicas

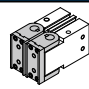
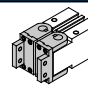
Fluído	Ar
Pressão de Operação	1.5 to 7 Bar
Temperatura	-10 to 60°C
Repetibilidade	±0.2 mm
Frequência Máx. de Operação	ø20, 25: 60 c.p.m. ø32 to 50: 30 c.p.m.
Lubrificação	Não necessária
Ação	Dupla ação

Modelo	Ø (mm)	Força de Prensão Efetiva (N·m)	Ângulo Abertura (ambos lados)		Peso (g)
			Aberto	Fechado	
CHW2-20D	20	0.30	180°	-5°	300
CHW2-20D1					320
CHW2-25D	25	0.73		-6°	510
CHW2-25D1					540
CHW2-32D	32	1.61		-5°	910
CHW2-32D1					950
CHW2-40D	40	3.70		-5°	2140
CHW2-40D1					2270
CHW2-50D	50	8.27	-4°	5100	
CHW2-50D1				5350	

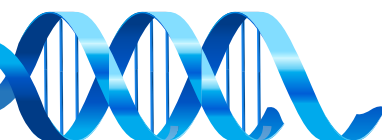
Simbologia



Codificação

C H W 2	-	<input type="text"/>	D	<input type="text"/>
Modelo		Ø (mm)	Tipo de Braço	
		20	-	1
		25		
		32	Padrão	Em ângulo Reto

Exemplo: CHW2-50D / CHW2-20D1

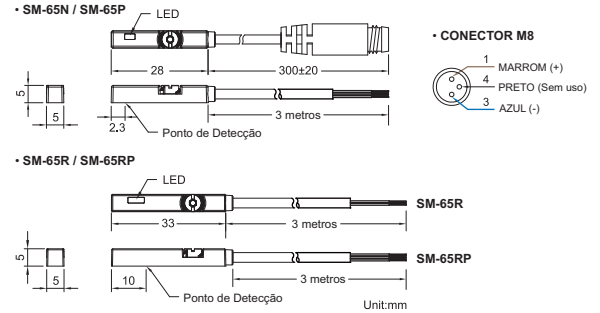


Sensor Aplicável

SM-65



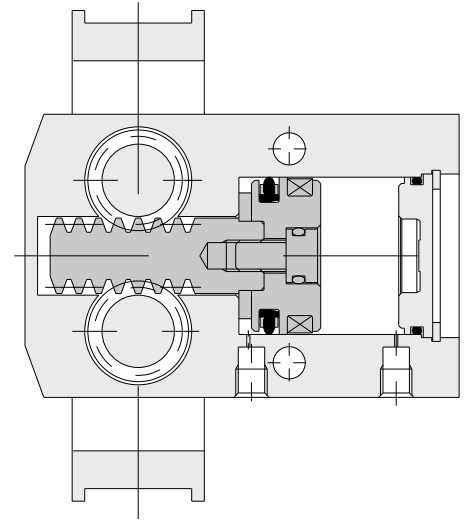
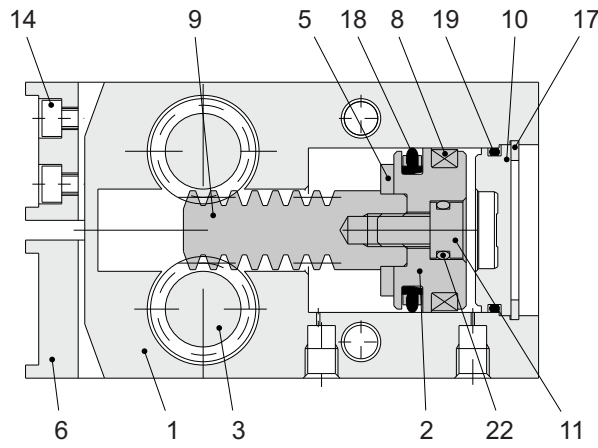
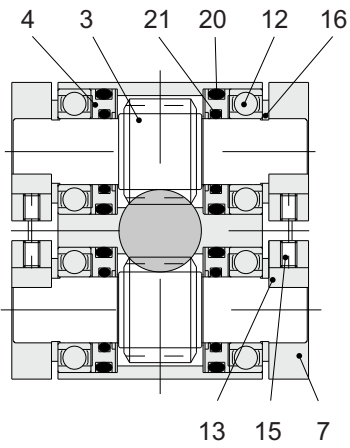
Tipo		Cabo	
R	Reed (2 fios)	3M	3 metros
P	PNP (3 fios)	M8	Conector M8
N	NPN (3 fios)		
RP	Reed (3 fios)		



Construção

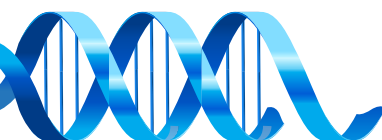
Fechado

Aberto



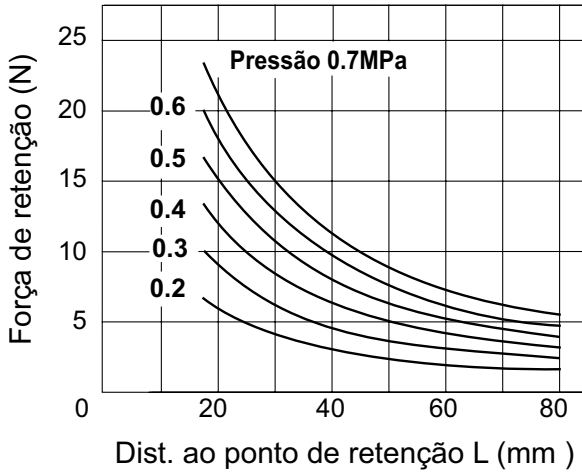
No.	Description	Material	Note
1	Corpo	Alumínio	Anodizado
2	Pistão	Alumínio	Anodizado
3	Pinhão	Aço carbono	Tratado Térm.
4	Tampa de vedação	Latão	
5	Amortecedor	Borracha de uretano	
6	Dedo (A)	Aço carbono	Nitretação
7	Dedo (B)	Aço carbono	Nitretação
8	Imã de Borracha	Sintético	
9	Cremalheira	Aço carbono	Nitretação

No.	Description	Material	Note
10	Capa	ø20, 25: Resina	
		ø32 to 50: Alumínio	Anodizado
11	Parafuso de pistão	Aço INOX	
12	Rolamento de Esferas	Aço carbono	
13	Chave	Aço carbono	
14	Parafuso Sextavado	Aço carbono	Zinco Cromado
15	Parafuso Sextavado Interno	Aço carbono	Zinco Cromado
16	Anel de retenção tipo C	Aço carbono	Reves. com Fosfato
17	Anel de retenção tipo C	Aço carbono	Reves. com Fosfato

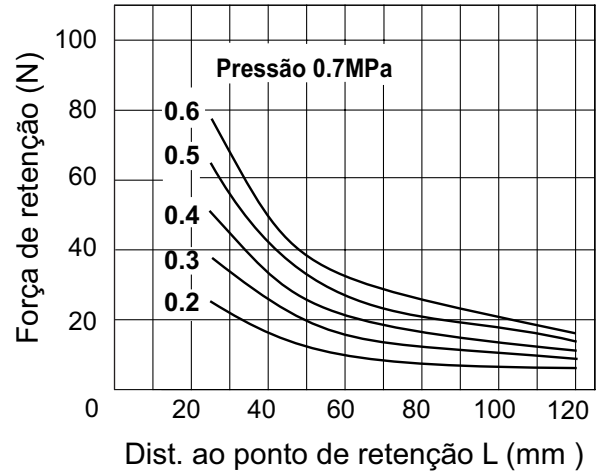


Força Efetiva - Gráficos

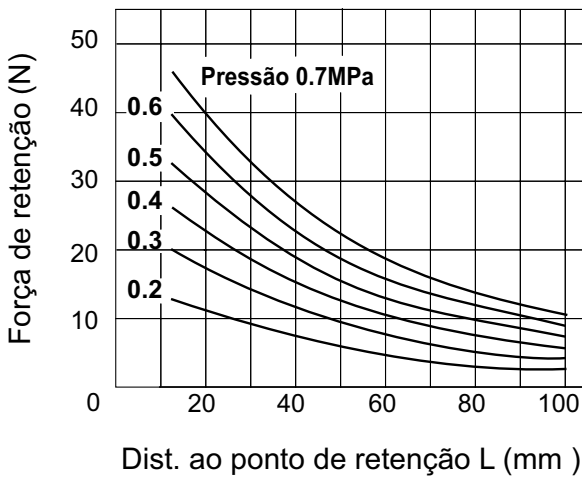
• CHW2-20D



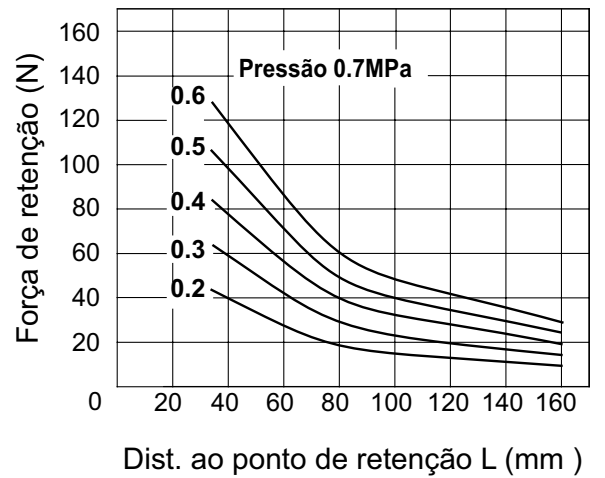
• CHW2-32D



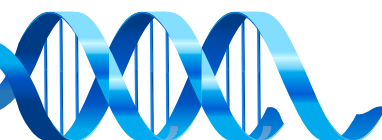
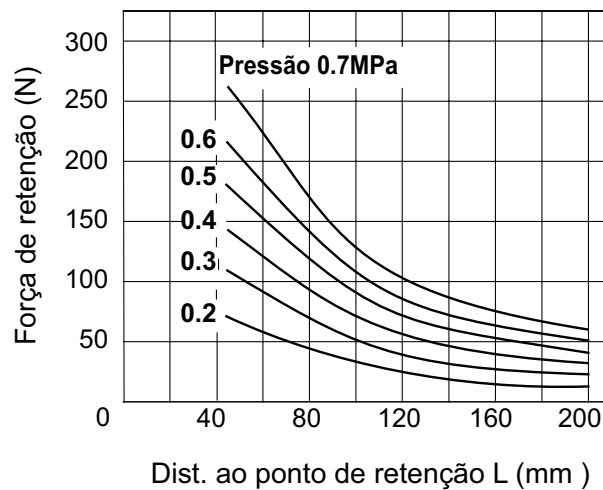
• CHW2-25D



• CHW2-40D

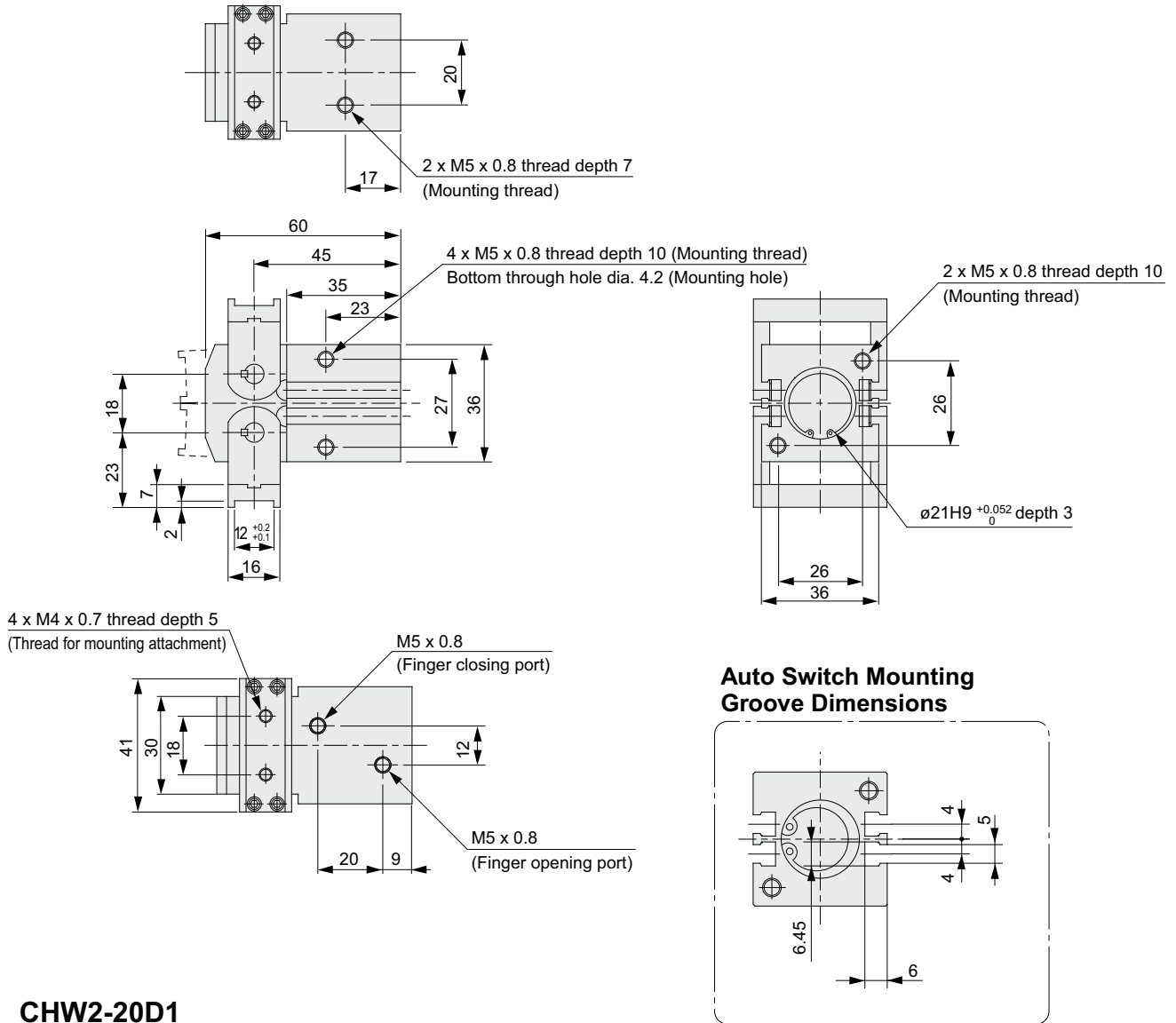


• CHW2-50D

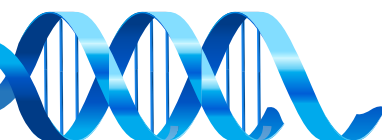
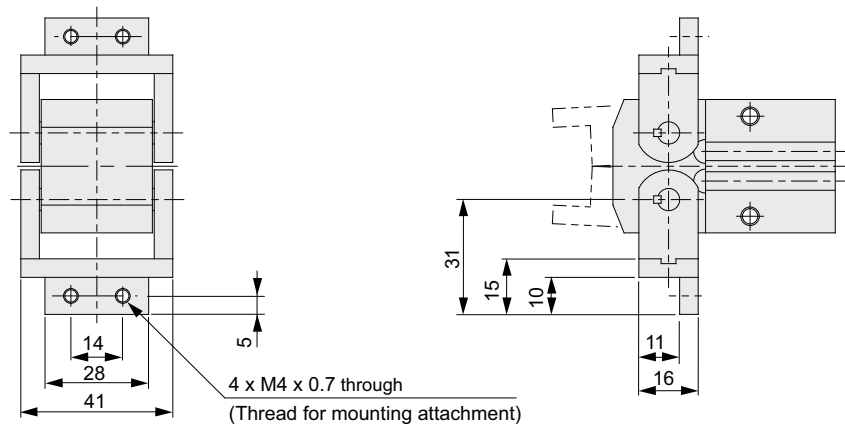


CHW2-20D
(Modelo Standard)

Dimensional

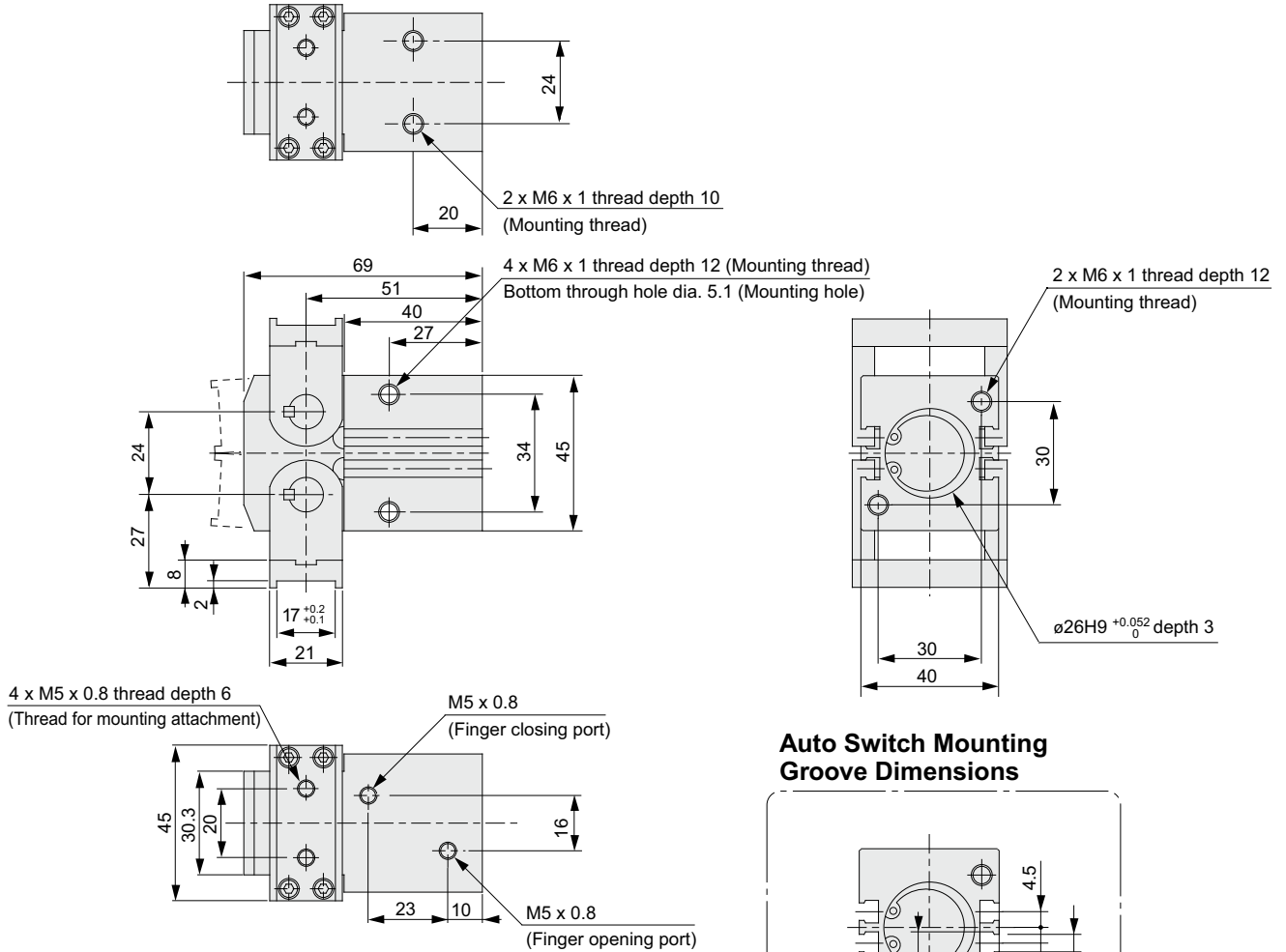


CHW2-20D1
(Modelo em ângulo reto)

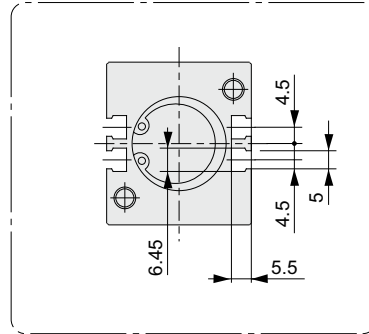


Garra Angular 180° tipo Pinhão e Cremalheira - Série CHW2

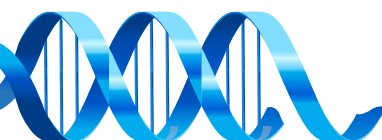
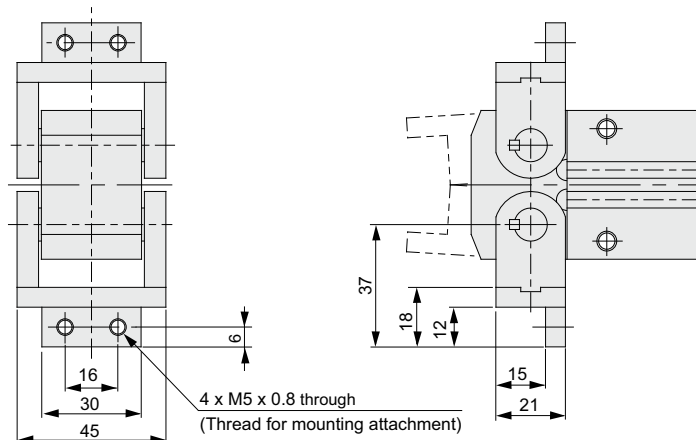
CHW2-25D
(Modelo Standard)



**Auto Switch Mounting
Groove Dimensions**

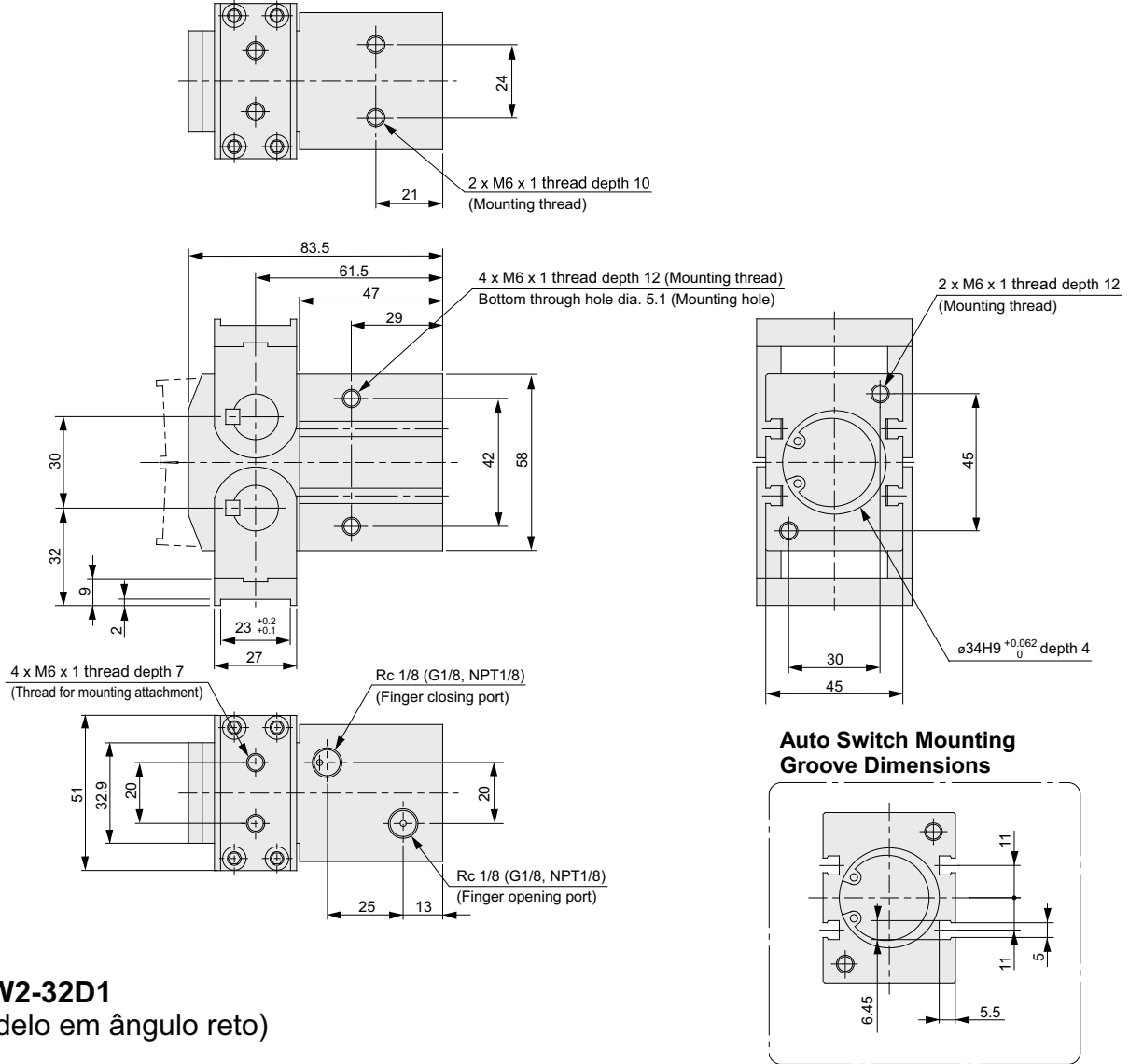


CHW2-25D1
(Modelo em ângulo reto)

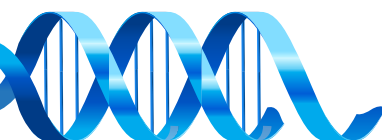
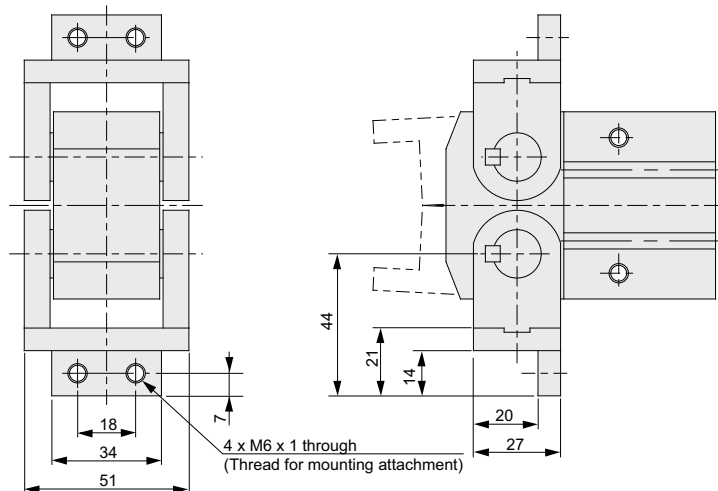


Garra Angular 180° tipo Pinhão e Cremalheira - Série CHW2

CHW2-32D
(Modelo Standard)

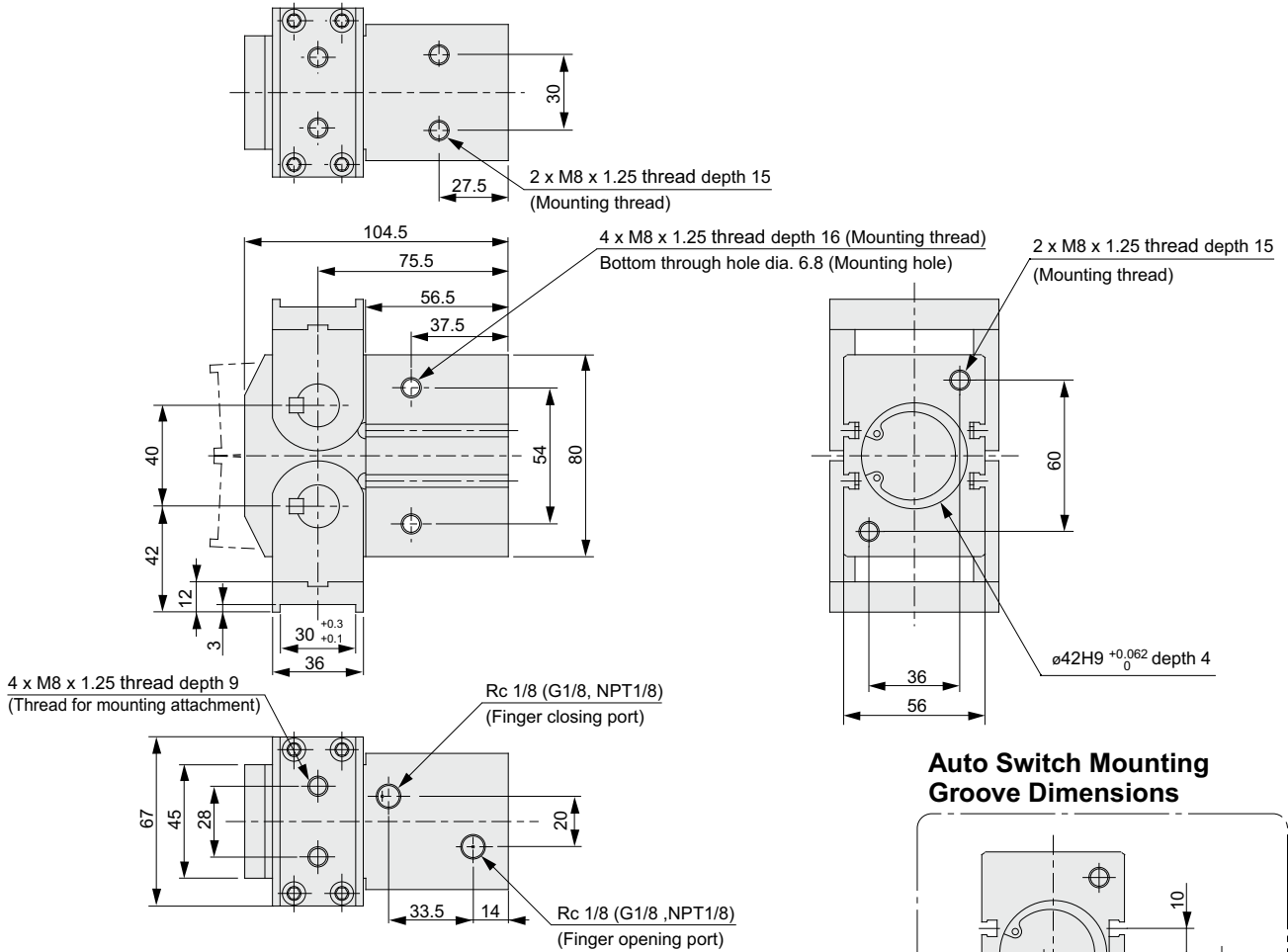


CHW2-32D1
(Modelo em ângulo reto)

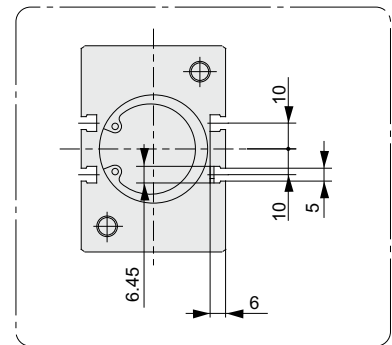


Garra Angular 180° tipo Pinhão e Cremalheira - Série CHW2

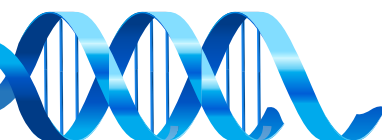
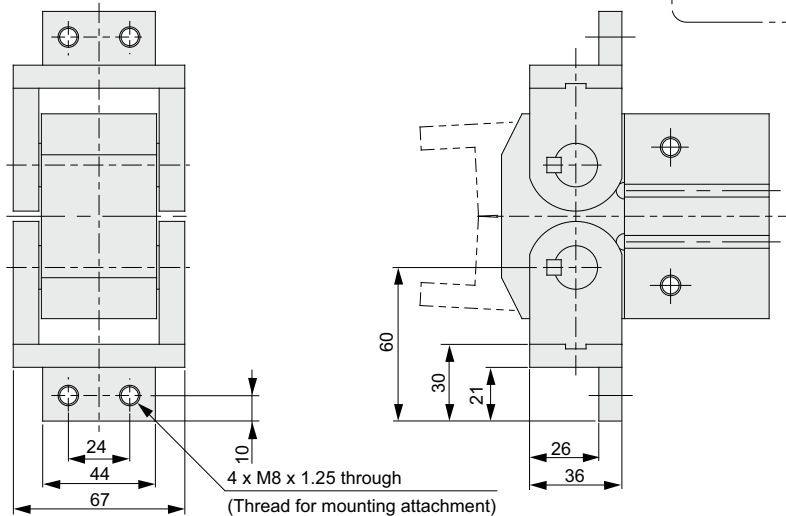
CHW2-40D
(Modelo Standard)



**Auto Switch Mounting
Groove Dimensions**

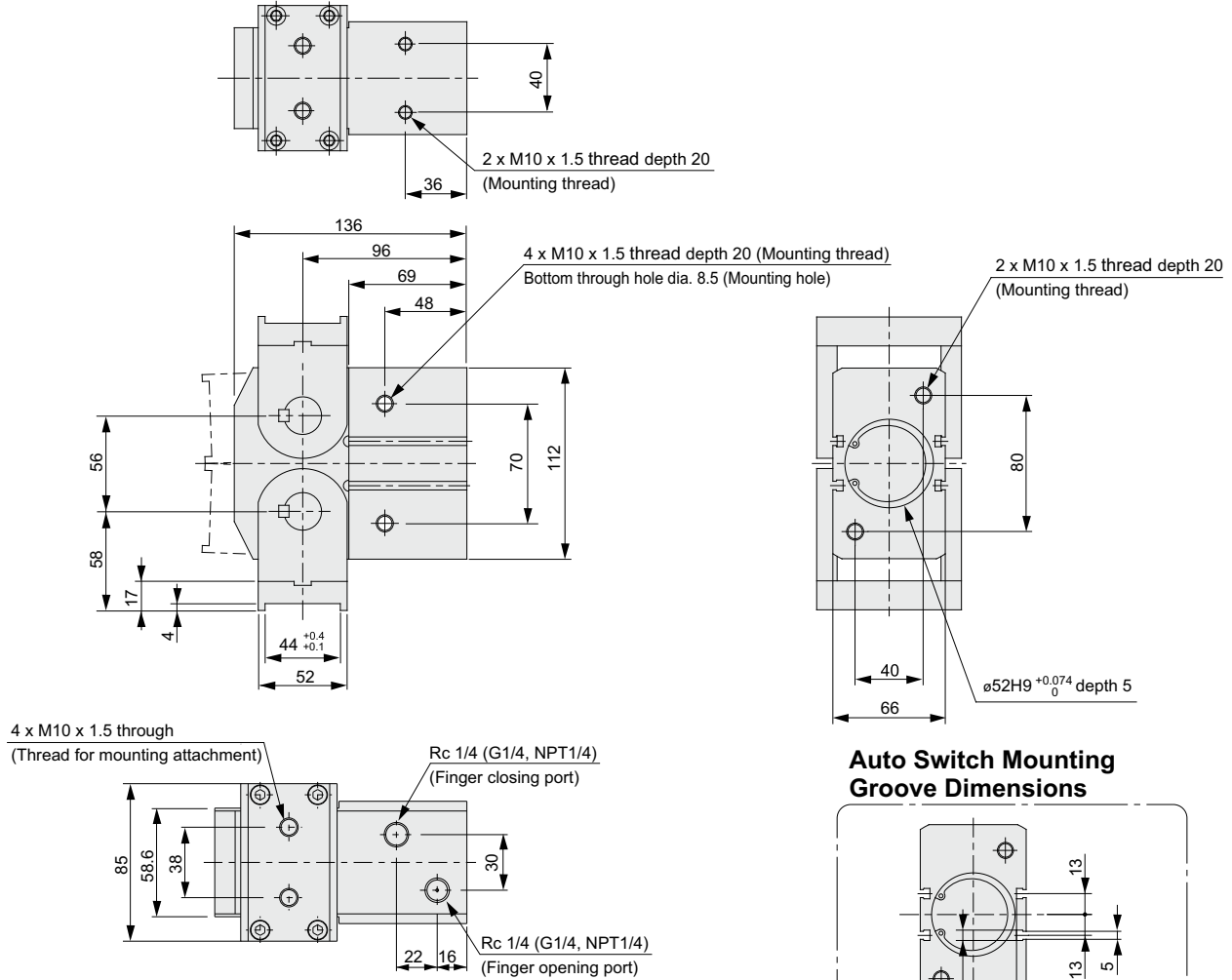


CHW2-40D1
(Modelo em ângulo reto)

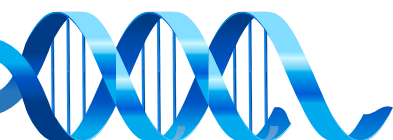
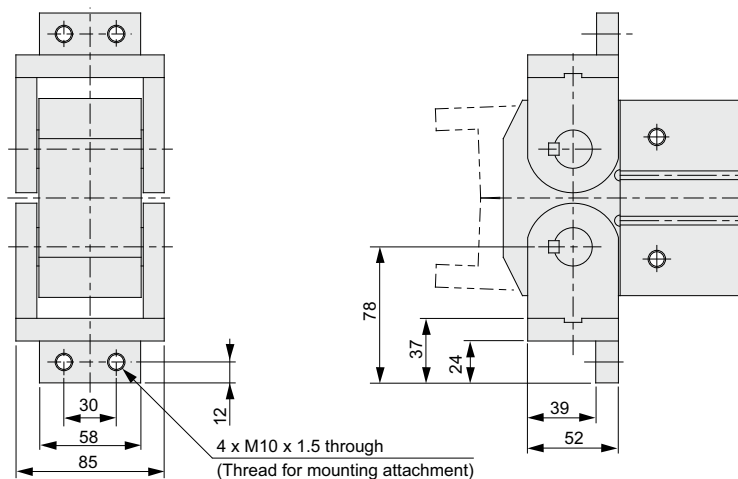


Garra Angular 180° tipo Pinhão e Cremalheira - Série CHW2

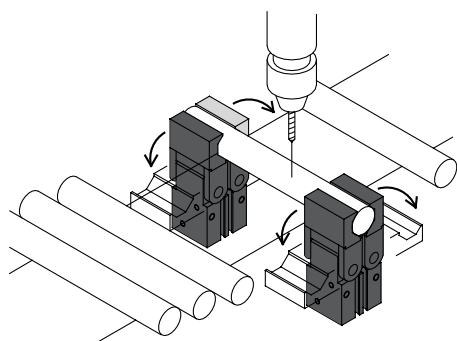
CHW2-50D
(Modelo Standard)



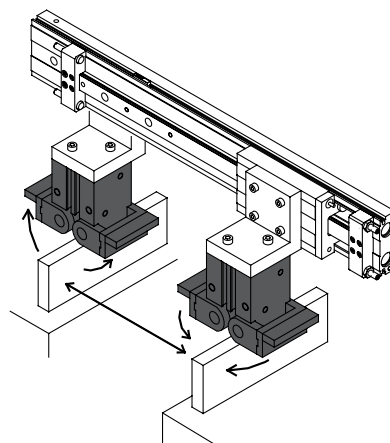
CHW2-50D1
(Modelo em ângulo reto)



Exemplos de Aplicação



• Aperto da peça

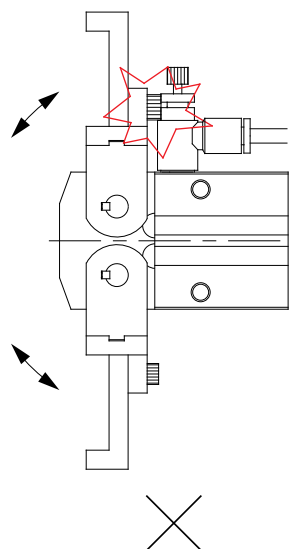


• Transferência de peças

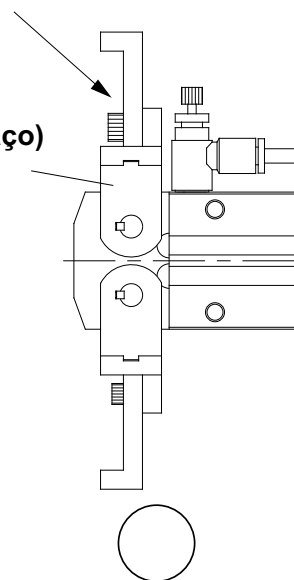
Atenção

- Ao utilizar a garra com dedos em ângulo reto, atentar-se a posição do parafuso para que não se choque com a reguladora de fluxo conforme imagem abaixo:

Utilize o parafuso por este lado



Dedo (Braço)



Quando utilizado deste lado, o parafuso se choca com a reguladora de fluxo

